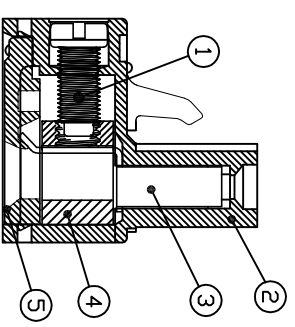
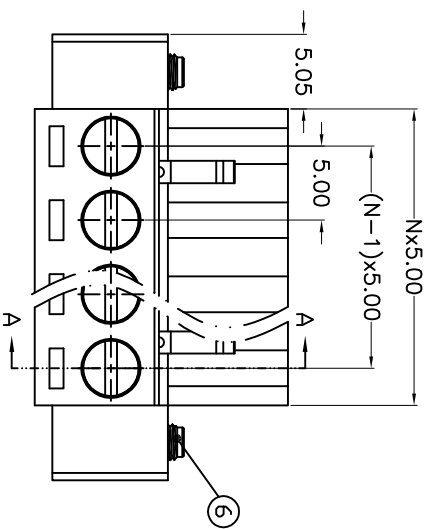
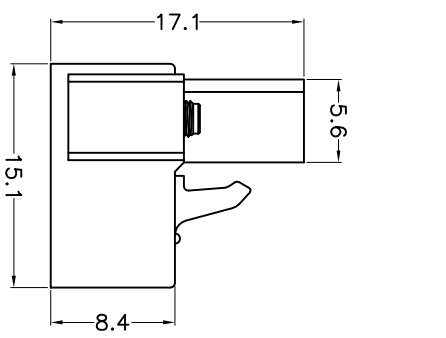
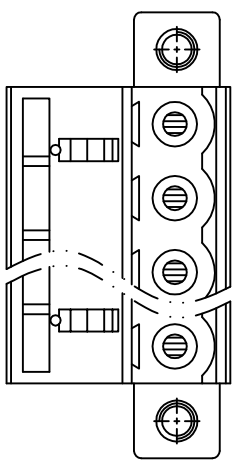
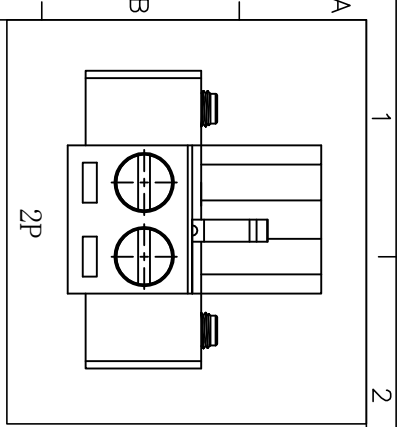
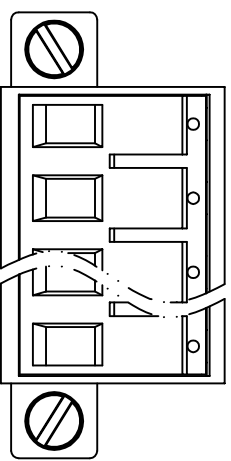


REV.	DESCRIPTION	DATE	DRAFTER	APPROVER
V1.0	DWG.REL	2024.9.22	ZHANG	JIN



SECTION A-A



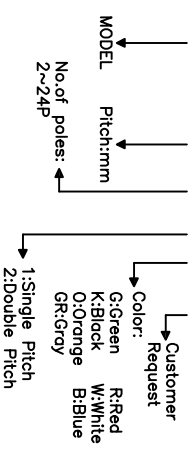
• Material
 ⌀Screw :M3.0 steel, Zinc plated, *- slot type
 ⌀Housing : PA66, UL94V-0
 ⌀Contact : Copper alloy, Tin plated
 ⌀Clamp : Copper alloy, Ni plated
 ⌀Cover : PA66, UL94V-0
 ⌀Screw :M2.5 steel, Zinc plated, *- slot type

• Electrical
 UL IEC
 Rated voltage : 300V 320V
 Rated current : 15A 20A
 Contact resistance : 20mΩ(Max)
 Insulation resistance: 500MΩ/DC500V
 Withstanding Voltage : AC2000V/1min
 Wire range: 28-12AWG 2.5mm²

• Mechanical
 Operating temperature:-40°C~+105°C
 Soldering temperature:250°C±5/5sec
 Torque: 0.5N.m (4.43lb.in)
 Strip length: 7mm

• Conform to REACH and RoHS

HOW TO ORDER
 KF2EDGM-X-5.0-XXP-1 X-XXXXX



Pitch range	Nominal dimension range	PROJECTION	TITLE
>0	>0	UNIT	KF2EDGM-X-5.0-XXP-1X
>6	>10	mm	
~	~	SHEET SIZE	SERIES KF2EDGM-X
6	10	A4	
~	~	DRAWING TYPE	SCALE
10	24	CUSTOMER DRAWING	
~	~	SCALE	1:1 SHEET 1 OF 1
±0.15	±0.30	DRAWING NO.	W10000692
±0.20	±0.30		
±0.30	±0.50		
±0.70	±1.00		
±1.30	±1.30		
±2°			