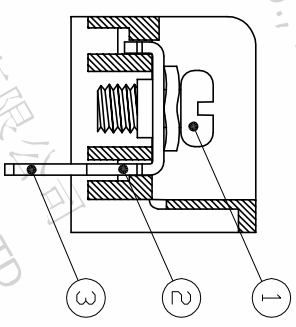
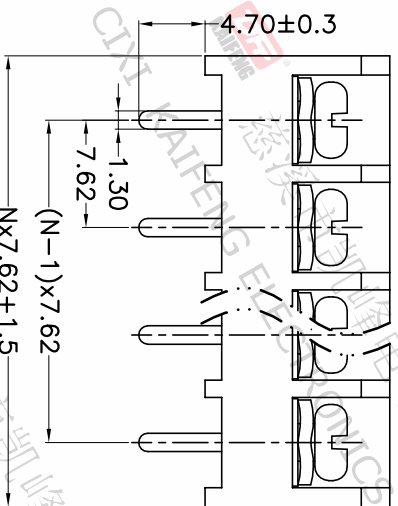
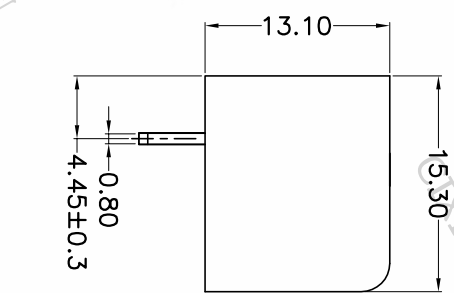
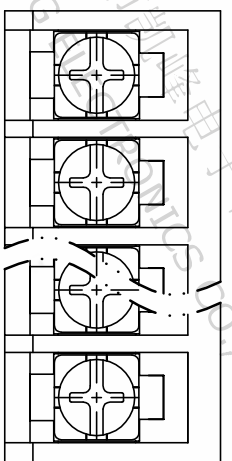


REV.	DESCRIPTION	DATE	DRAFTER	APPROVER
A1	DWG.REL	2020.05.20	LIUZH	JIN



- Material
 - ØScrews : M3.5 steel, Ni plated
 - ØTerminal : Brass, 1in plated
 - ØHousing : PA66,UL94V-0

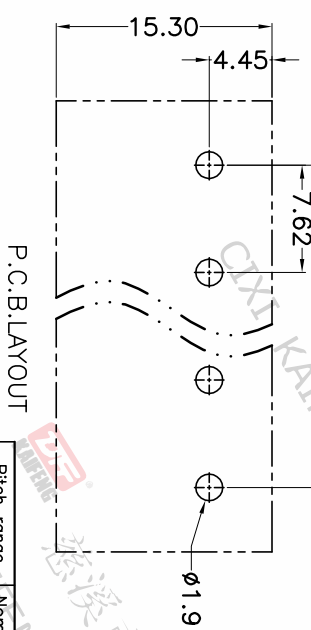
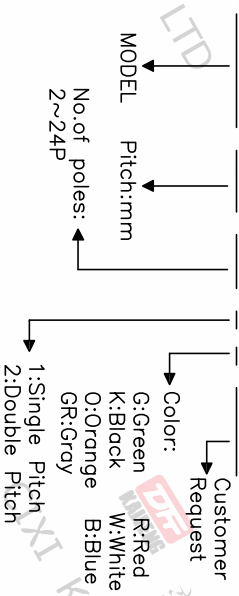
- Electrical
 - UL IEC
 - Rated voltage : 300V 450V
 - Rated current : 15A 24A
 - Contact resistance : 20mΩ(Max)
 - Insultion resistance: 500MΩ/DC500V
 - Withstanding Voltage : AC2000V/1min
 - Wire range: 22-14AWG 2.5mm²

- Mechanical
 - Operating temperature: -40°C~+105°C
 - Soldering temperature:250°C±5/5sec
 - Torque: 0.8N.m (7.02Lb.in)

• RoHS compliance

HOW TO ORDER

HB-762-7.62-XXP-1 X-XXXXX



P.C.B.LAYOUT

Pitch range	Nominal dimension range	0.1/10
>0	>10	0.1/10
~6	~10	~
~10	~24	~
±0.15	±0.20	±2°
±0.30	±0.30	
±0.50	±0.50	
±0.70	±1.00	
±1.00	±1.30	

DRAWING TYPE	CUSTOMER DRAWING
SCALE	1:1
SHEET	1 OF 1
DRAWING NO.	W12000462

PROJECTION	UNIT	TITLE
1st Angle	mm	HB-762-7.62-XXP-1X
SHEET SIZE	A4	SERIES HB-762

DFE 慈溪市凯峰电子有限公司
CIXI KAIFENG ELECTRONICS CO.,LTD