

REV.	DESCRIPTION	DATE	DRAFTER	APPROVER
A1	DWG.REL	2020.05.18	LiuZH	JIN

- Material
 - ØScrews : M3.5 steel, Ni plated
 - ØTerminal : Brass, Tin plated
 - ØHousing : PA66,UL94V-0

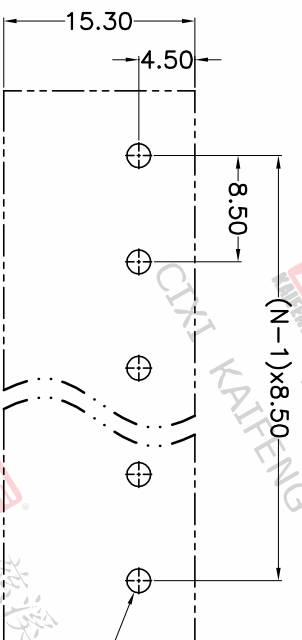
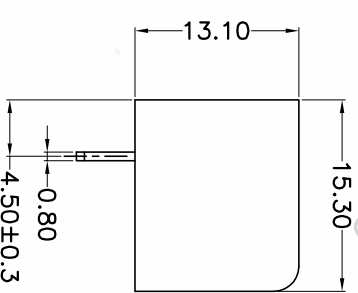
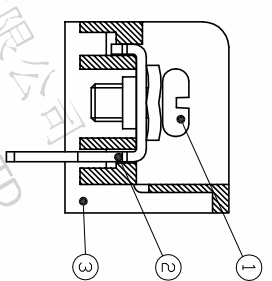
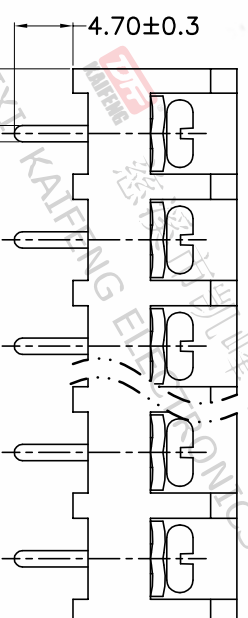
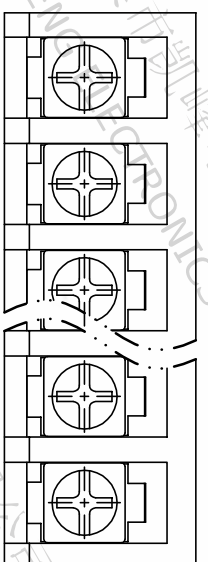
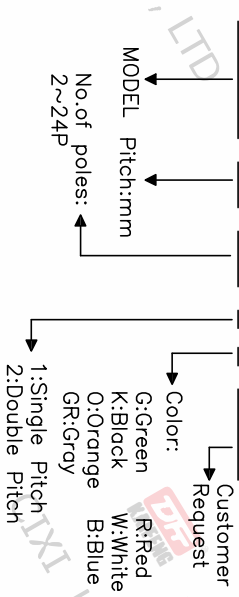
- Electrical
 - UL IEC
 - Rated voltage : 300V 450V
 - Rated current : 20A 24A
 - Contact resistance : 20mΩ(Max)
 - Insulation resistance: 500MΩ/DC500V
 - Withstanding Voltage : AC2000V/1min
 - Wire range: 22-12AWG 2.5mm²

- Mechanical
 - Operating temperature: -40°C~+105°C
 - Soldering temperature:250°C±5/5sec
 - Torque: 0.8N.m (7.02Lb.in)

• RoHS compliance

HOW TO ORDER

HB-850-8.5-XXP-1 X-XXXXX



Pitch range	Nominal dimension range	PROJECTION	UNIT
>0	>30	0.1/10	mm
>6	>100		
~	~		
6	10		
10	24		
~	~		
30	60		
~	~		
100	150		
~	~		
±2'	±1.00		
±0.15	±0.20		
±0.30	±0.30		
±0.50	±0.70		
±1.00	±1.30		

DRAWING TYPE	CUSTOMER DRAWING
SCALE	1:1
SHEET	1 OF 1
DRAWING NO.	W12000212

TITLE	PROJECTION	SHEET SIZE	SERIES
HB-850-8.5-XXP-1X	UNIT	A4	HB-850

DFE 慈溪市凯峰电子有限公司
CIXI KAIFENG ELECTRONICS CO.,LTD