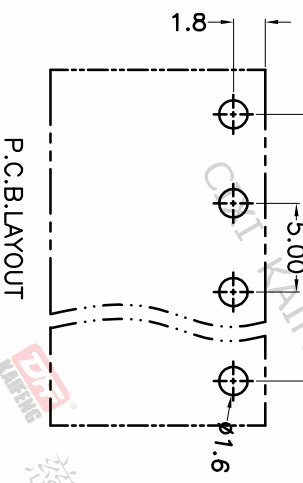
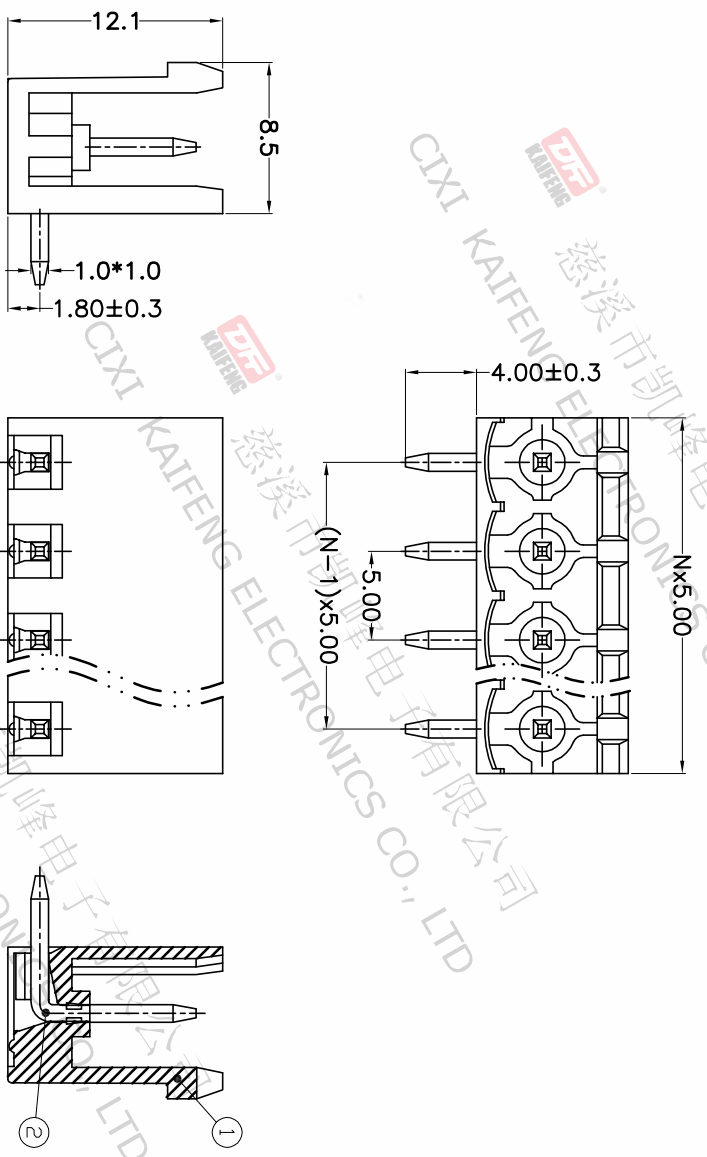


REV.	DESCRIPTION	DATE	DRAFTER	APPROVER
A1	DWG.REL	2020.6.02	ZHANG	JIN



Pitch range	Nominal dimension range	0.1/10	±2°
>0	>30	0.1/10	±2°
~6	~60	0.1/10	±2°
~10	~100	0.1/10	±2°
~24	~150	0.1/10	±2°
±0.15	±0.30	±0.30	±2°
	±0.50	±0.70	±1.00
	±1.00	±1.30	±2°

DRAWING TYPE	CUSTOMER DRAWING	SCALE	1:1	SHEET	1 OF 1
DRAWING NO.	W100000662				

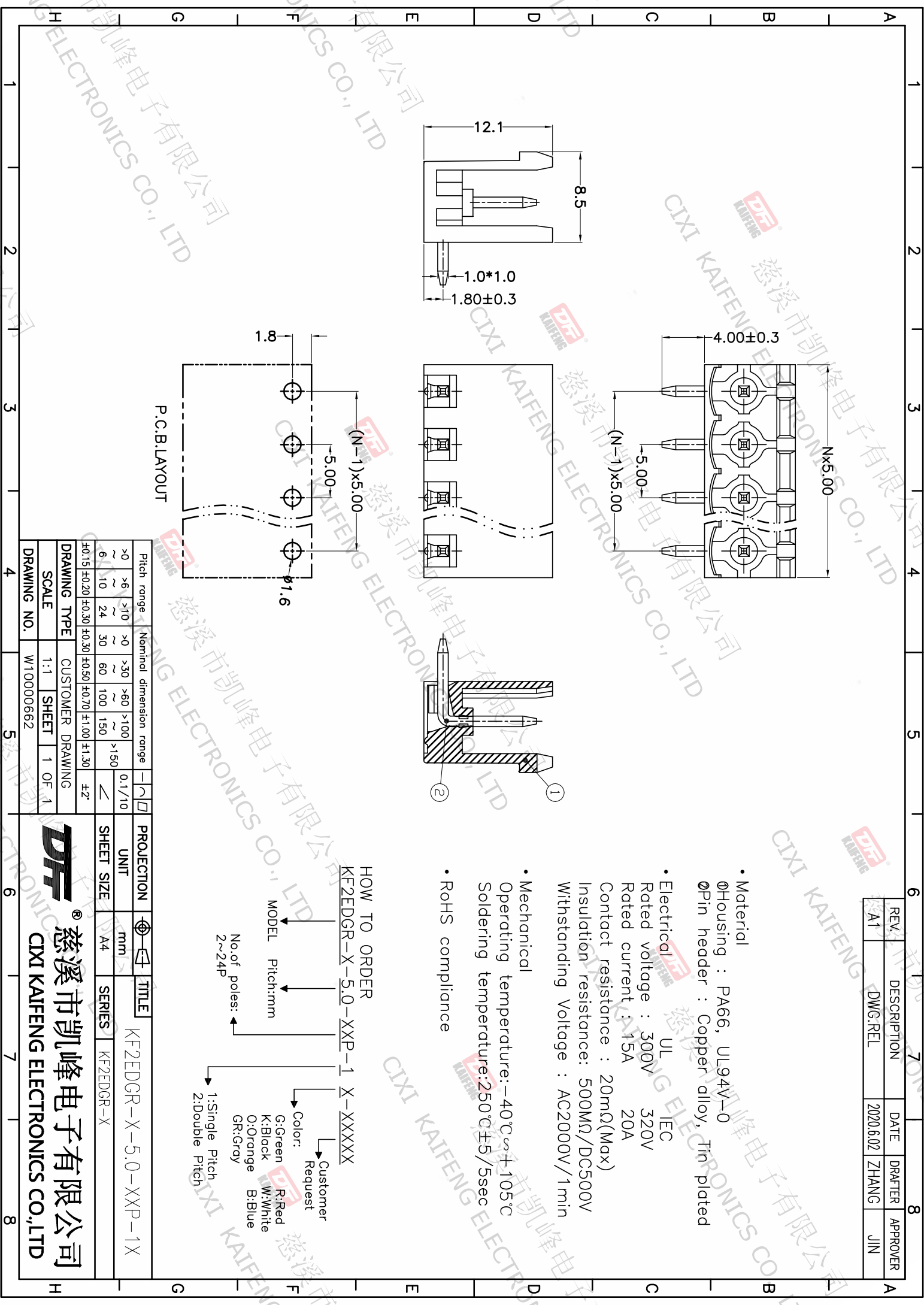
- Material
 @Housing : PA66, UL94V-0
 @Pin header : Copper alloy, Tin plated
- Electrical
 UL IEC
 Rated voltage : 300V 320V
 Rated current : 15A 20A
 Contact resistance : 20mΩ(Max)
 Insulation resistance: 500MΩ/DC500V
 Withstanding Voltage : AC2000V/1min
- Mechanical
 Operating temperature: -40°C ~ +105°C
 Soldering temperature: 250°C ±5/5sec
- RoHS compliance

HOW TO ORDER
 KF2EDGR-X-5.0-XXP-1 X-XXXXX

MODEL Pitch:mm
 No.of poles: 2~24P

Color: Customer Request
 G:Green R:Red
 K:Black W:White
 O:Orange B:Blue
 GR:Gray

1:Single Pitch
 2:Double Pitch



DF 慈溪市凯峰电子有限公司
 CIXI KAIFENG ELECTRONICS CO.,LTD