

REV.	DESCRIPTION	DATE	DRAFTER	APPROVER
A1	DWG.REL	2020.06.10	DENG	JIN

- Material
 - ①Housing: PA66, UL94V-0
 - ②Plastic cover: PA66, UL94V-0
 - ③Clip: Copper alloy, Silver plating
 - ④Reed: Stainless steel

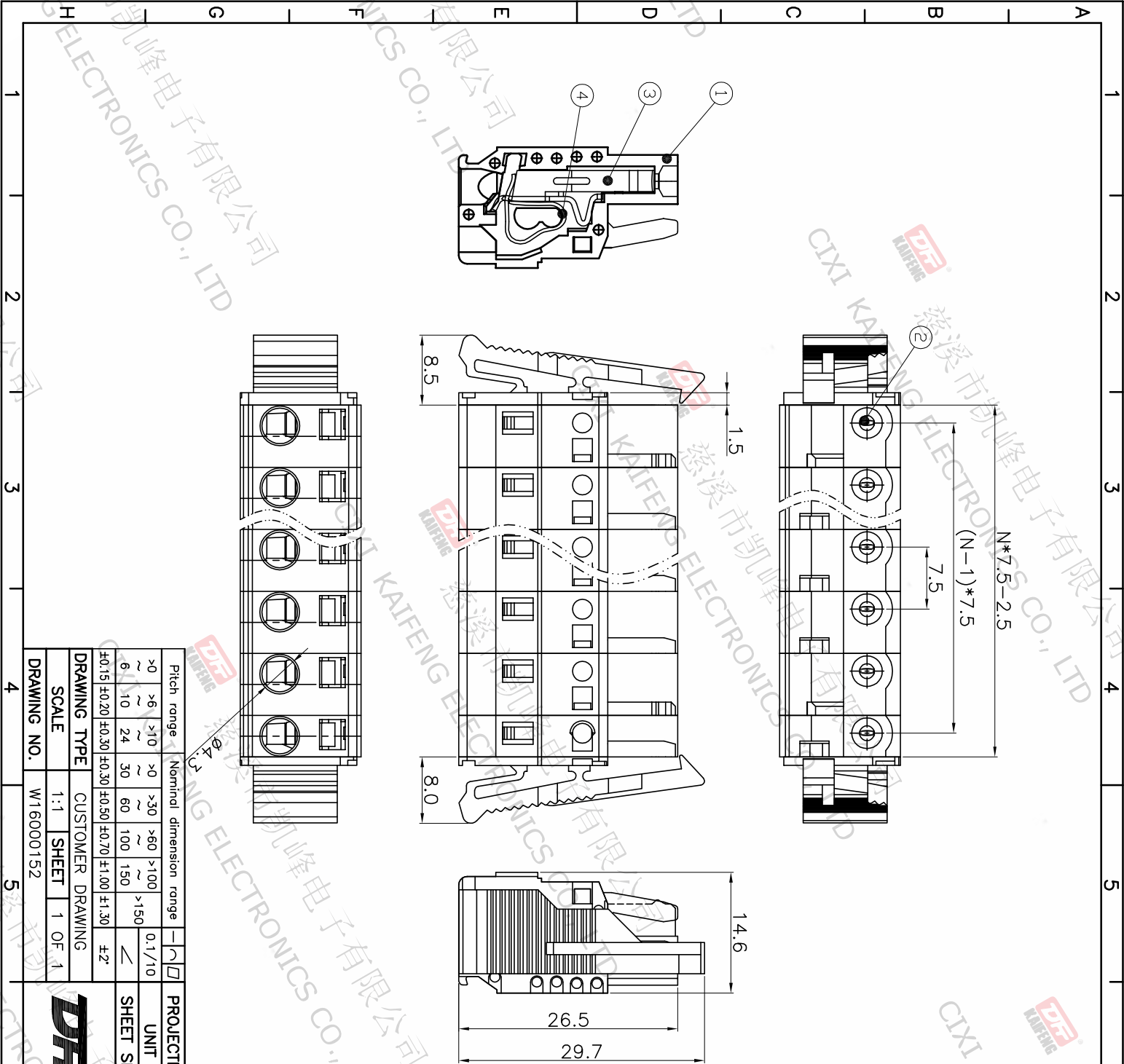
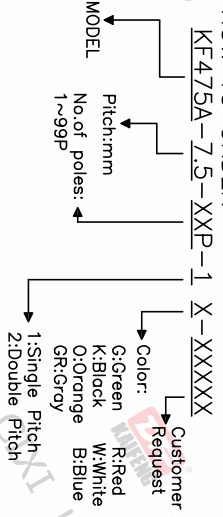
- Electrical

UL	IEC
Rated Voltage: 300V	630V
Rated Current: 15A	16A
Contact Resistance: 20mΩ	
Insulation Resistance: 500MΩ/DC500V	
Withstanding Voltage: AC1500V/1Min	
Wire range: 28-12AWG, 0.2-2.5mm ²	

- Mechanical

Temperature Range: -30°C~+105°C
MAX Soldering: +250°C,(5 Seconds)
- RoHS compliance

HOW TO ORDER



Pitch range	Nominal dimension range	PROJECTION	UNIT
>0	>6	□	mm
~	>10	□	mm
~	10	□	mm
~	24	□	mm
~	30	□	mm
~	60	□	mm
~	100	□	mm
~	150	□	mm
~	>150	□	mm
±0.15	±0.20	□	±2°
±0.30	±0.30	□	±2°
±0.50	±0.50	□	±2°
±0.70	±1.00	□	±2°
±1.30	±1.30	□	±2°

DRAWING TYPE	CUSTOMER DRAWING
SCALE	1:1
SHEET	1 OF 1
DRAWING NO.	W16000152

DF 慈溪市凯峰电子有限公司
CIXI KAIFENG ELECTRONICS CO.,LTD

TITLE: KF475A-7.5-XXP-1X

SHEET SIZE: A4

SERIES: KF475